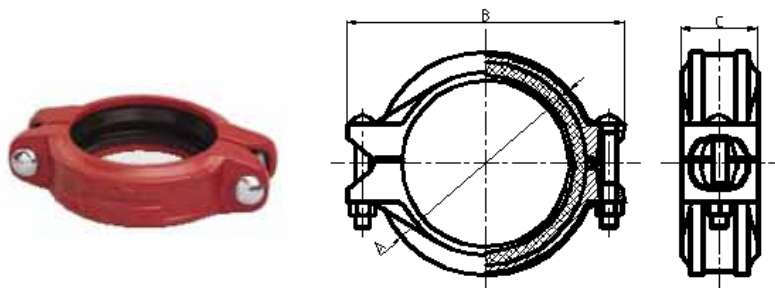
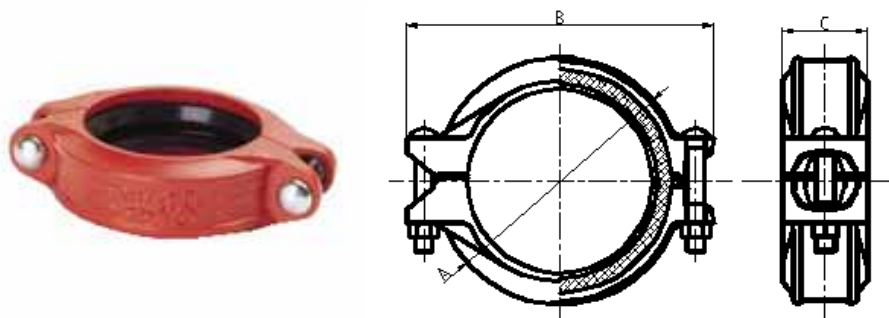


Rigid Coupling 1GS



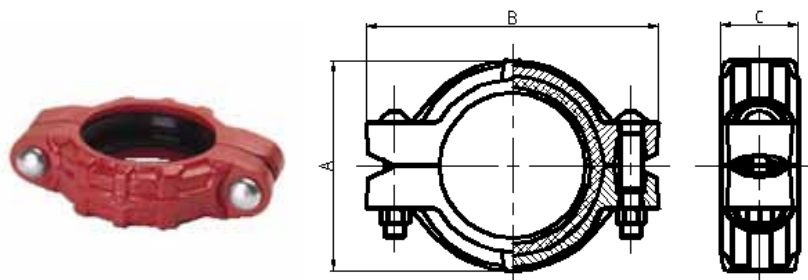
Nominal Size mm / in	Pipe OD mm / in	Working Pressure PSI / Mpa	Dimensions			Bolt Size No.-Size mm
			A mm/in	B mm/in	C mm/in	
65 2½	76.1 3	300 2.07	101 3.98	142 5.59	44.5 1.75	2 - 3/8 X 55
80 3	88.9 3.5	300 2.07	114 4.5	157 6.18	44.5 1.75	2 - 3/8 X 70
100 4	114.3 4.5	300 2.07	142 5.6	195 7.68	49 1.93	2 - 1/2 X 70
125 5	141.3 5.563	300 2.07	171 6.73	225 8.86	50.5 1.99	2 - 1/2 X 75
150 6	165.1 6.5	300 2.07	196 7.72	252 9.92	50.5 1.99	2 - 1/2 X 75
150 6	168.3 6.625	300 2.07	203 8	260 10.24	50.8 2	2 - 1/2 X 75
200 8	219.1 8.625	300 2.07	255 10.05	325 12.8	58.5 2.3	2 - 5/8 X 85

Rigid Coupling 1G



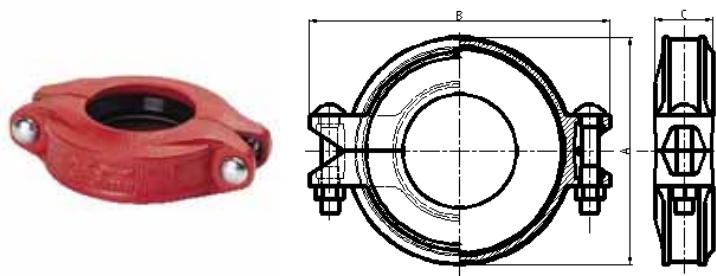
Nominal Size mm / in	Pipe OD mm / in	Working Pressure PSI / Mpa	Dimensions			Bolt Size No.-Size mm
			A mm/in	B mm/in	C mm/in	
25 1	33.7 1.327	500 3.45	59.5 2.35	100 3.94	44.5 1.75	2 - 3/8 X 55
32 1¼	42.4 1.669	500 3.45	67 2.64	106 4.17	46 1.81	2 - 3/8 X 55
40 1½	48.3 1.9	500 3.45	72.5 2.85	112 4.41	46 1.81	2 - 3/8 X 55
50 2	60.3 2.375	500 3.45	85 3.35	132 5.2	47 1.85	2 - 3/8 X 55
65 2½	73 2.875	500 3.45	99 3.9	140.5 5.53	45.5 1.79	2 - 3/8 X 55
65 2½	76.1 3	500 3.45	101.5 4	147 5.79	45.5 1.79	2 - 3/8 X 55
80 3	88.9 3.5	500 3.45	116 4.57	170 6.69	47 1.85	2 - 1/2 X 70
100 4	114.3 4.5	500 3.45	146 5.75	201 7.91	52.5 2.07	2 - 1/2 X 70
125 5	141.3 5.563	450 3.1	172 6.77	234 9.21	52.5 2.07	2 - 5/8 X 85
150 6	165.1 6.5	450 3.1	200 7.88	264 10.4	52.5 2.07	2 - 5/8 X 85
150 6	168.3 6.625	450 3.1	204 8.03	270 10.63	52.5 2.07	2 - 5/8 X 85
200 8	219.1 8.625	450 3.1	260 10.24	343 13.5	63 2.48	2 - 3/4 X 115
250 10	273 10.75	300 2.07	318 12.52	410 16.14	63 2.48	2 - 3/4 X 120
300 12	323.9 12.75	300 2.07	368.5 14.5	465 18.3	63.5 2.5	2 - 7/8 X 140

Flexible Coupling 1NH (Heavy Duty)



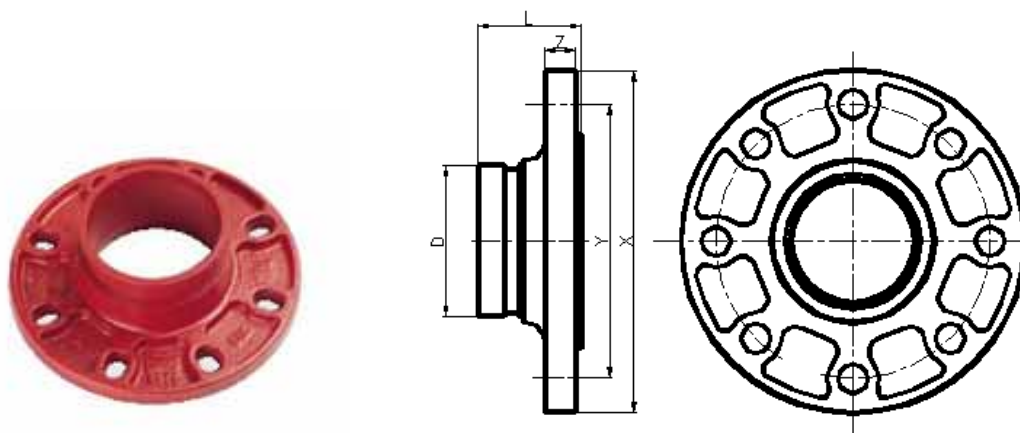
Nominal Size mm / in	Pipe OD mm / in	Working Pressure PSI / Mpa	Dimensions			Bolt Size No.-Size mm
			A mm/in	B mm/in	C mm/in	
50 2	60.3 2.375	750 5.18	91.5 3.60	134 5.28	46 1.81	2 - 1/2 X 75
65 2½	76.1 3.0	750 5.18	104 4.09	155 6.10	46 1.81	2 - 1/2 X 75
80 3	88.9 3.5	750 5.18	122.5 6.0	172.5 6.80	47 1.85	2 - 1/2 X 75
100 4	114.3 4.50	750 5.18	152.5 6.0	215 8.46	51 2.05	2 - 5/8 X 85
125 5	141.3 5.563	700 4.83	181 7.13	250 9.85	52 2.05	2 - 3/4 X 115
150 6	165.1 6.5	700 4.83	207 8.15	280 11.02	52 2.05	2 - 3/4 X 115
150 6	168.3 6.625	700 4.83	210 8.27	285 11.22	52 2.05	2 - 3/4 X 115
200 8	219.1 8.625	700 4.83	269 10.60	355 13.98	62 2.44	2 - 7/8 X 140

Reducing Coupling 1N



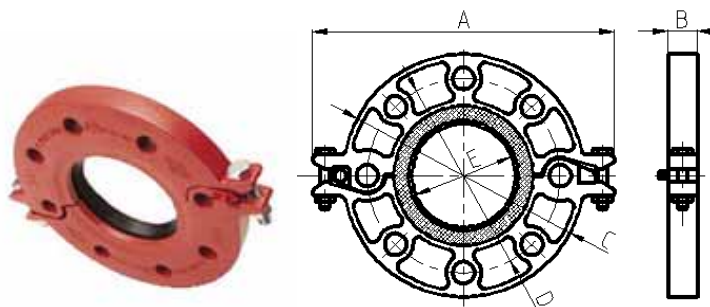
Nominal Size	Pipe O.D	Working Pressure	Dimensions			Bolt Size
			mm/in			
mm/in	mm/in	PSI/MPa	A	B	C	NO.-Size mm
65 x 50 2½ x 2	73.0 x 60.3 2.875 x 2.375	300 2.07	101.5 4	138 5.43	47 1.85	2 - 3/8 x 55
65 x 50 2½ x 2	76.1 X 60.3 3.000 x 2.375	300 2.07	102 4.02	142 5.6	44.5 1.75	2 - 3/8 x 55
80 x 50 3 x 2	88.9 X 60.3 3.500 x 2.375	300 2.07	118 4.65	168 6.61	47 1.85	2 - 1/2 x 70
80 x 65 3 x 2½	88.9 x 73.0 3.500 x 2.875	300 2.07	118 4.65	168 6.61	47 1.85	2 - 1/2 x 70
80 x 65 3 x 2½	88.9 x 76.1 3.500 x 3.000	300 2.07	118 4.65	168 6.61	47 1.85	2 - 1/2 x 70
100 x 50 4 x 2	114.3 x 60.3 4.500 x 2.375	300 2.07	144 5.67	198 7.8	50.5 1.99	2 - 1/2 x 70
100 x 65 4 x 2½	114.3 x 73.0 4.500 x 2.875	300 2.07	144 5.67	198 7.8	50.5 1.99	2 - 1/2 x 70
100 x 65 4 x 2½	114.3 x 76.1 4.500 x 3.000	300 2.07	144 5.67	198 7.8	50.5 1.99	2 - 1/2 x 70
100 x 80 4 x 3	114.3 x 88.9 4.500 x 3.500	300 2.07	148.5 5.85	198 7.8	51 2.01	2 - 1/2 x 70
150 x 100 6 x 4	165.1 x 114.3 6.500 x 4.500	300 2.07	198 7.8	260 10.24	51 2.01	2 - 5/8 x 85
150 x 100 6 x 4	168.3 x 114.3 6.625 x 4.500	300 2.07	202.5 7.97	270 10.63	51.5 2.03	2 - 5/8 x 85
200 x 150 8 x 6	219.1 x 165.1 8.625 x 6.500	300 2.07	258 10.16	338 13.31	60 2.36	2 - 3/4 x 115
200 x 150 8 x 6	219.1 x 168.3 8.625 x 6.625	300 2.07	258 10.16	338 13.31	60 2.36	2 - 3/4 x 115

Grooved Flange Adaptor - 321G - PN16



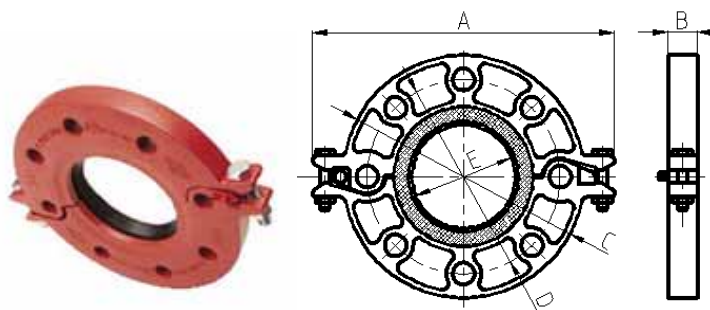
Nominal Size mm/in	Pipe O.D mm/in	Working Pressure PSI/MPa	Dimensions				Bolt/Nut No.- Size mm
			L mm/in	X mm	Y mm	Z mm	
40 1½	48.3 1.9	225 1.6	60.3 2.375	150 5.9	110 4.33	16 0.63	4-M16
50 2	60.3 2.375	225 1.6	60.3 2.375	152.5 6	125 4.92	18 0.71	4-M16
65 2½	73 2.875	225 1.6	70 2.756	185 7.28	145 5.7	16 0.63	4-M16
65 76.1	76.1 3	225 1.6	70 2.756	185 7.28	145 5.7	16 0.63	4-M16
80 3	88.9 3.5	225 1.6	70 2.756	200 7.87	160 6.3	16 0.63	8-M16
100 4	114.3 4.5	225 1.6	76 2.992	229 9	180 7.09	16 0.63	8-M16
125 15	141.3 5.563	225 1.6	89 3.5	252 9.921	210 8.27	21 0.83	8-M16
150 165.1	165.1 6.5	225 1.6	89 3.5	280 11	240 9.45	24 0.94	8-M20
150 6	168.3 6.625	225 1.6	89 3.5	280 11	240 9.45	24 0.94	8-M20
200 8	219.1 8.625	225 1.6	102 4.016	343 13.5	295 11.61	25 0.98	12-M20
250 10	273 10.75	225 1.6	85 3.346	406 16	355 13.98	24 0.94	12-M24
300 12	323.9 12.75	225 1.6	90 3.543	483 19	410 16.14	32 1.26	12-M24

Hinge Flange - 321 - PN16



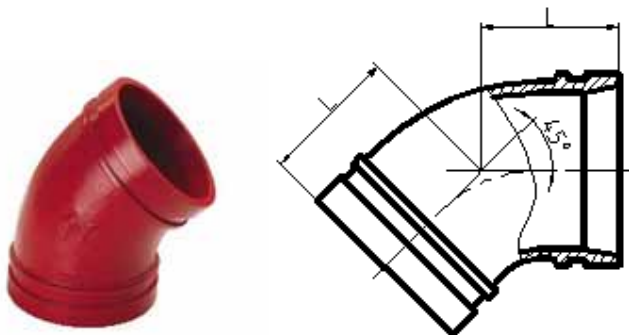
Nominal Size mm/in	Pipe O.D mm/in	Working Pressure PSI/MPa	Dimensions					Bolt/Nut	
			A mm/in	B mm/in	C mm/in	D mm/in	E mm/in	No.-SIZE mm	
40 1½	48.3 1.9	300 2.07	195 7.68	24 0.95	150 5.9	110 4.33	45.4 1.78	2- M10X50	4-M16
50 2	60.3 2.375	300 2.07	220 8.66	24 0.95	165 6.5	125 4.92	57.5 2.26	2- M10X50	4-M16
65 2½	73 2.875	300 2.07	235 9.25	24 0.95	182 7.16	145 5.71	69.8 2.74	2- M10X50	4-M16
65 76.1	76.1 3	300 2.07	235 9.25	24 0.95	185 7.28	145 5.71	72.7 2.86	2- M10X50	4-M16
80 3	88.9 3.5	300 2.07	252 9.92	24 0.95	200 7.87	160 6.3	85.5 3.37	2- M10X50	8-M16
100 4	114.3 4.5	300 2.07	280 11.02	25.5 1	229 9	180 7.09	110.5 4.35	2- M12X55	8-M16
125 139.7	139.7 5.5	300 2.07	320 12.6	25.5 1	254 10	210 8.27	135.5 5.33	2- M12X65	8-M16
150 165.1	165.1 6.5	300 2.07	346 13.62	25.5 1	280 11	240 9.45	160.8 6.33	2- M12X65	8-M20
165 6	168.3 6.625	300 2.07	346 13.62	25.5 1	280 11	240 9.45	164.3 6.47	2- M12X65	8-M20
200 8	219.1 8.625	300 2.07	414.3 16.31	30 1.18	341.4 13.44	295 11.61	214.9 8.46	2- 3/8X70	12-M20
250 10	273 10.75	300 2.07	481.2 18.94	30.3 1.19	405.6 15.97	355 13.98	268.9 10.59	2- 3/8X70	12-M24
300 12	323.9 12.75	300 2.07	530.5 20.88	30.3 1.19	460 18.11	410 16.14	318.9 12.56	2- 3/8X70	12-M24

Hinge Flange - 321 - ANSI



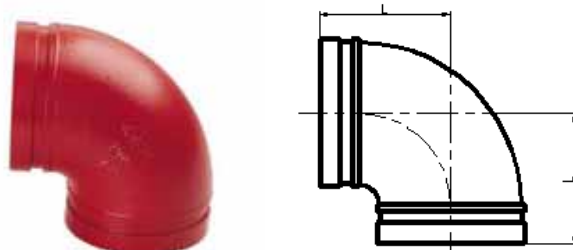
Nominal Size mm/in	Pipe O.D mm/in	Working Pressure PSI/MPa	Dimensions					Bolt/Nut	
			A mm/in	B mm/in	C mm/in	D mm/in	E mm/in	No.-SIZE mm	
50 2	60.3 2.375	300 2.07	206 8.11	22 0.86	152 5.98	121 4.76	57.5 2.26	2- M10X50	4-M16
65 2½	73 2.875	300 2.07	230 9.05	22 0.86	178 7	140 5.51	69.8 2.74	2- M10X50	4-M16
80 3	88.9 3.5	300 2.07	242 9.53	24 0.95	191 7.52	152 5.98	85.5 3.37	2- M10X50	8-M16
100 4	114.3 4.5	300 2.07	280 11.02	24 0.95	229 9	191 7.52	110.5 4.35	2- M12X55	8-M16
125 5	141.3 5.563	300 2.07	325 12.79	24.5 0.96	254 10	216 8.5	137.4 5.41	2- M12X65	8-M20
200 8	219.1 8.625	300 2.07	414.3 16.31	30 1.18	341.4 13.44	298.5 11.75	214.9 8.46	2- 3/8X70	12-M20

Elbow - 45° - 120



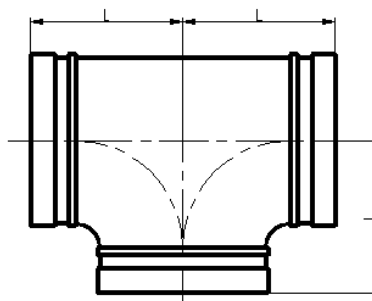
Nominal Size mm/in	Pipe O.D mm/in	Working Pressure Psi/Mpa	Dimensions L mm/in
25 1	33.7 1.315	500 3.45	44.45 1.75
32 1¼	42.4 1.66	500 3.45	44.45 1.75
40 1½	48.3 1.9	500 3.45	44.45 1.75
50 2	60.3 2.375	500 3.45	50.8 2
65 2½	73 2.875	500 3.45	57.15 2.25
65 2½	76.1 3	500 3.45	57.15 2.25
80 3	88.9 3.5	500 3.45	63.5 2.5
100 4	114.3 4.5	500 3.45	76.2 3
125 5	141.3 5.563	500 3.45	82.5 3.25
150 6	165.1 6.5	500 3.45	89 3.5
150 6	168.3 6.625	500 3.45	89 3.5
200 8	219.1 8.625	500 3.45	108 4.25
250 10	273 10.75	500 3.45	120.5 4.75
300 12	323.9 12.75	500 3.45	133.35 5.25

Elbow - 90' - 90S



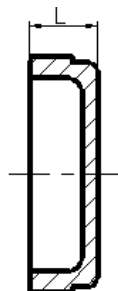
Nominal Size mm/in	Pipe O.D. mm/in	Working Pressure Psi/Mpa	90S 90' Elbow
			L
50 2	60.3 2.375	300 2.07	69.85 2.75
65 2½	73 2.875	300 2.07	76.2 3
65 2½	76.1 3	300 2.07	76.2 3
80 3	88.9 3.5	300 2.07	85.85 3.38
100 4	114.3 4.5	300 2.07	101.6 4
125 5	139.7 5.5	300 2.07	123.95 4.88
150 6	165.1 6.5	300 2.07	139.7 5.5
150 6	168.3 6.625	300 2.07	139.7 5.5
200 8	216.3 8.516	300 2.07	174.5 6.87
200 8	219.1 8.625	300 2.07	174.5 6.87

Equal Tee - 130S



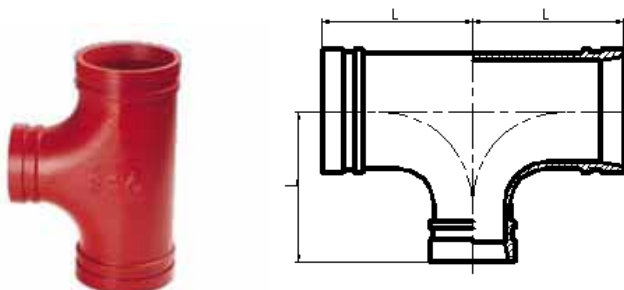
Nominal Size mm/in	Pipe O.D. mm/in	Working Pressure Psi/Mpa	130S Equal Tee
			L
50 2	60.3 2.375	300 2.07	69.85 2.75
65 2½	73 2.875	300 2.07	76.2 3
65 2½	76.1 3	300 2.07	76.2 3
80 3	88.9 3.5	300 2.07	85.85 3.38
100 4	114.3 4.5	300 2.07	101.6 4
125 5	139.7 5.5	300 2.07	123.95 4.88
150 6	165.1 6.5	300 2.07	139.7 5.5
150 6	168.3 6.625	300 2.07	139.7 5.5
200 8	216.3 8.516	300 2.07	174.5 6.87
200 8	219.1 8.625	300 2.07	174.5 6.87

End Cap - 300



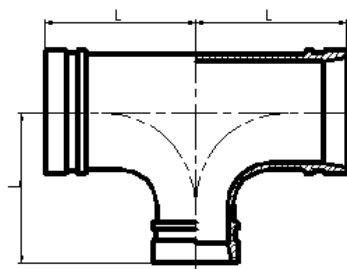
Nominal Size mm/in	Pipe O.D mm/in	Working Pressure PSI/MPa	Dimensions L mm/in
25 1	33.7 1.315	500 3.45	22.1 0.87
32 1¼	42.4 1.66	500 3.45	25.5 1
40 1½	48.3 1.9	500 3.45	25.5 1
50 2	60.3 2.375	500 3.45	25.5 1
65 2½	73 2.875	500 3.45	25.5 1
65 2½	76.1 3	500 3.45	25.5 1
80 3	88.9 3.5	500 3.45	25.5 1
100 4	114.3 4.5	500 3.45	27 1.06
125 5	141.3 5.563	500 3.45	27 1.06
150 6	165.1 6.5	500 3.45	27 1.06
150 6	168.3 6.625	500 3.45	27 1.06
200 8	219.1 8.625	500 3.45	30.5 1.2
250 10	273 10.75	500 3.45	32 1.26
300 12	323.9 12.75	500 3.45	32 1.26

Reducing Tee - 130R



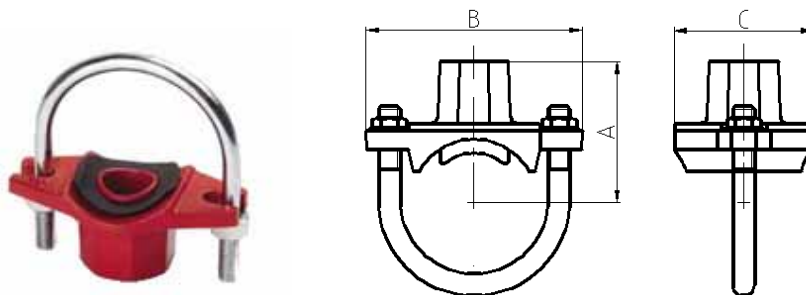
Nominal Size mm/in	Pipe O.D mm/in	Working Pressure PSI/MPa	Dimensions L mm/in
50 X 25 – 40 2 X 1 – 1 ½	60.3 X 33.7 – 48.3 2.375 X 1.315 – 1.9	500 3.45	82.5 3.25
65 x 32 – 50 2½ x 1½ - 2	73.0 x 42.4 – 60.3 2.875 x 1.66 – 2.375	500 3.45	101.5 4
65 x 32 – 50 2½ x 1¼	76.1 x 42.4 – 60.3 3.000 x 1.660 – 2.375	500 3.45	101.5 4
80 X 32 – 65 3X1¼ - 2 ½	88.9 X 42.4 – 76.1 3.5 X 1.66 – 3.0	500 3.45	108 4.25
100 x 25 – 80 4 x 3	114.3 x 33.7 – 88.9 4.5 x 1.315 – 3.5	500 3.45	127 5
125 X 65 – 100 5 X 2½ - 4	133.0 X 76.1 – 108.0 5.25 X 3.0 – 4.5	500 3.45	140 5.5
125 x 40 5 x 1½	139.7 x 48.3 5.500 x 1.900	500 3.45	140 5.5
125 x 50 – 100 5 x 2 – 4	139.7 x 60.3 – 114.3 5.50 x 2.375 – 4.5	500 3.45	140 5.5
125 x 50 5 x 2	141.3 x 60.3 5.563 x 2.375	500 3.45	140 5.5

Reducing Tee - 130R



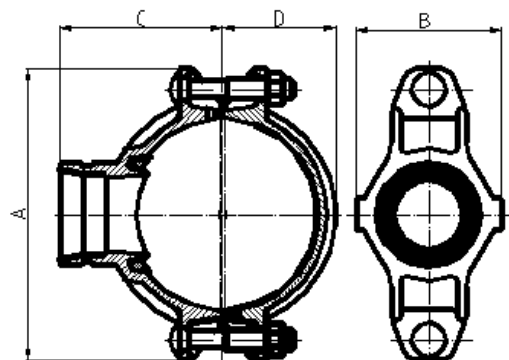
Nominal Size mm/in	Pipe O.D mm/in	Working Pressure PSI/MPa	Dimensions L mm/in
150 x 50 – 125 6 x 2 – 5	165.1 x 60.3 – 139.7 6.500 x 2.375 – 5.5	500 3.45	165 6.5
150 X 50 – 125 6 X 2 – 5	168.3 X 60.3 – 141.3 6.625 X 2.375 –	500 3.45	168.3 6.5
200 x 50 – 168.3 8 x 2 – 6	219.1 x 60.3 – 168.3 8.625 x 2.375 X 6.625	500 3.45	197 7.75
200 x 150 8 x 6	219.1 x 165.1 8.625 x 6.500	500 3.45	197 7.75
250 x 200 10 x 6 – 8	273.0 x 159.0 – 219.1 10.75 x 6.25 – 8.625	500 3.45	229 9
300 x 150 – 250 12 x 6 – 10	323.9 x 165.1 – 273 12.75 x 6.5 – 10.75	500 3.45	254 10

Mechanical Tee (U Bolt) - 3L



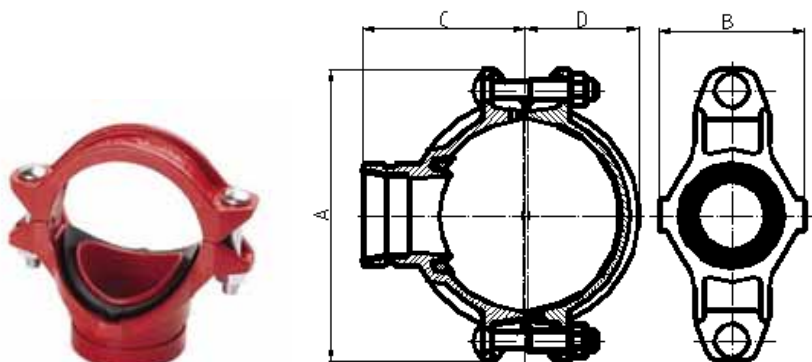
Nominal Size mm/in	Hole Dia +1.6 ,0/+0.063,0 mm/in	Working Pressure PSI/Mpa	Dimensions			U Bolt Size in
			A mm/in	B mm/in	C mm/in	
32 X 15 – 20 1¼ X ½ - ¾	30 1.18	300 2.07	54.4 2.14	88.9 3.50	57.2 2.25	3/8 X 67
32 X 25 1¼ X 1	30 1.18	300 2.07	57.7 2.27	88.9 3.50	57.2 2.25	3/8 X 67
40 X 15 – 20 1 ½ X ½ - ¾	30 1.18	300 2.07	57.4 2.26	88.9 3.50	57.2 2.25	3/8 X 67
40 X 25 1 ½ X 1	30 1.18	300 2.07	60.8 2.39	88.9 3.50	57.2 2.25	3/8 X 67
50 X 15 – 20 2 X ½ - ¾	30 1.18	300 2.07	63.3 2.49	95.3 3.75	57.2 2.25	3/8 X 82
50 X 25 2 X 1	30 1.18	300 2.07	66.6 2.62	95.3 3.75	57.2 2.25	3/8 X 82
65 X 15 – 20 2 ½ X ½ - 3/4	30 1.18	300 2.07	69.9 2.75	108.0 4.25	57.2 2.250	3/8 X 95
65 X 25 2 ½ X 1	30 1.18	300 2.07	73.2 2.88	108.0 4.25	57.2 2.25	3/8 X 95
65 X 15 – 20 76.1 X ½ - 1	30 1.18	300 2.07	69.9 2.75	108.0 4.25	57.2 2.250	3/8 X 98
65 X 25 76.1 X 1	30 1.18	300 2.07	73.2 2.88	108.0 4.25	57.2 2.25	3/8 X 98

Mechanical Tee (Grooved Outlet) - 3GS



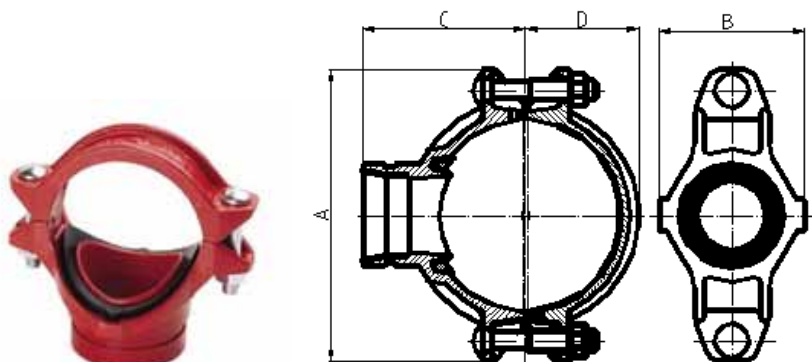
Nominal Size mm / in	Pipe OD mm / in	Working Pressure PSI / Mpa	Hole Dia mm / in	Dimensions mm/in				Bolt Size
			+1.6,0/+0.063,0	A	B	C	D	
50 x 32 2 x 1¼	60.3 x 42.4 2.375 x 1.660	300 2.07	45 1.75	116 4.57	76 2.99	69.5 2.74	39 1.54	3/8 x 55
50 x 40 2 x 1½	60.3 x 48.3 2.375 x 1.900	300 2.07	45 1.75	116 4.57	76 2.99	69.5 2.74	39 1.54	3/8 x 55
65 x 32 2½ x 1¼	73.0 x 42.4 2.875 x 1.660	300 2.07	51 2	144 5.67	84.5 3.33	75 2.95	49 1.93	1/2 x 60
65 x 25 76.1 x 1	76.1 x 33.7 3.000 x 1.315	300 2.07	38 1.5	137 5.39	71 2.8	78 3.07	49.5 1.95	1/2 x 75
65 x 32 76.1 x 1¼	76.1 x 42.4 3.000 x 1.660	300 2.07	51 2	137 5.39	84.5 3.33	78 3.07	49.5 1.95	1/2 x 75
65 x 40 76.1 x 1½	76.1 x 48.3 3.000 x 1.900	300 2.07	51 2	137 5.39	84.5 3.33	78 3.07	49.5 1.95	1/2 x 75
80 x 25 3 x 1	88.9 x 33.7 3.500 x 1.315	300 2.07	38 1.5	152 5.98	72.5 2.85	84.5 3.33	56.5 2.22	1/2 x 75
80 x 32 3 x 1¼	88.9 x 42.4 3.500 x 1.660	300 2.07	51 2	152 5.98	85.5 3.37	84.5 3.33	56.5 2.22	1/2 x 75
80 x 40 3 x 1½	88.9 x 48.3 3.500 x 1.900	300 2.07	51 2	152 5.98	85.5 3.37	84.5 3.33	56.5 2.22	1/2 x 75
80 x 50 3 x 2	88.9 x 60.3 3.500 x 2.375	300 2.07	64 2.5	152 5.98	98 3.86	84.5 3.33	56.5 2.22	1/2 x 75
100 x 25 4 x 1	114.3 x 33.7 4.500 x 1.315	300 2.07	38 1.5	188 7.4	78.4 3.09	102 4.02	70 2.76	1/2 x 75
100 x 40 4 x 1½	114.3 x 48.3 4.500 x 1.900	300 2.07	51 2	188 7.4	89 3.5	102 4.02	70 2.76	1/2 x 75

Mechanical Tee (Grooved Outlet) - 3GS



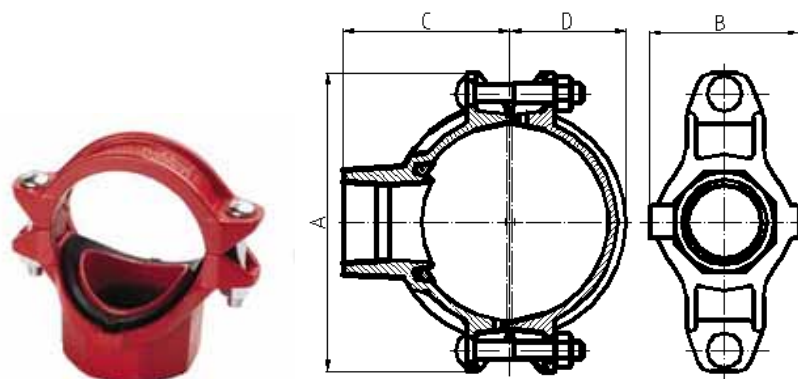
Nominal Size mm / in	Pipe OD mm / in	Working Pressure PSI / Mpa	Hole Dia mm / in	Dimensions mm/in				Bolt Size
100 x 50 4 x 2	114.3 x 60.3 4.500 x 2.375	300 2.07	64 2.5	188 7.4	104.5 4.11	102 4.02	70 2.76	1/2 x 75
100 x 65 4 x 2½	114.3 x 73.0 4.500 x 2.875	300 2.07	70 2.75	188 7.4	104.5 4.11	102 4.02	70 2.76	1/2 x 75
100 x 65 4 x 76.1	114.3 x 76.1 4.500 x 3.000	300 2.07	70 2.75	188 7.4	104.5 4.11	102 4.02	70 2.76	1/2 x 75
100 x 80 4 x 3	114.3 x 88.9 4.500 x 3.500	300 2.07	89 3.5	188 7.4	124 4.88	102 4.02	70 2.76	1/2 x 75
125 x 80 133.0 x 3	133.0 x 88.9 5.250 x 3.500	300 2.07	89 3.5	209 8.23	132 5.2	109.5 4.31	77 3.03	5/8 x 85
125 x 50 139.7 x 2	139.7 x 60.3 5.500 x 2.375	300 2.07	64 2.5	221.5 8.72	112.5 4.43	118 4.65	84 3.31	5/8 x 85
125 x 65 139.7 x 76.1	139.7 x 76.1 5.500 x 3.000	300 2.07	70 2.75	221.5 8.72	112.5 4.43	118 4.65	84 3.31	5/8 x 85
125 x 80 139.7 x 3	139.7 x 88.9 5.500 x 3.500	300 2.07	89 3.5	221.5 8.72	136 5.35	122 4.8	84 3.31	5/8 x 85
125 x 100 139.7 x 4	139.7 x 114.3 5.500 x 4.500	300 2.07	114 4.5	221.5 8.72	160 6.3	125 4.92	84 3.31	5/8 x 85
150 x 50 165.1 x 2	165.1 x 60.3 6.500 x 2.375	300 2.07	64 2.5	244 9.6	112.5 4.43	127 5	97.5 3.84	5/8 x 110
150 x 65 165.1 x 76.1	165.1 x 76.1 6.500 x 3.000	300 2.07	70 2.75	244 9.6	112.5 4.43	127 5	97.5 3.84	5/8 x 110
150 x 80 6½O.D x 3	165.1 x 88.9 6.500 x 3.500	300 2.07	89 3.5	244 9.6	132 5.2	141 5.55	97.5 3.84	5/8 x 110

Mechanical Tee (Grooved Outlet) - 3GS



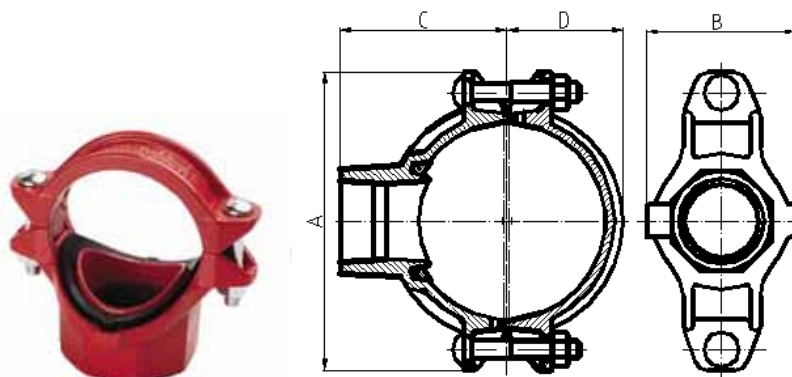
Nominal Size mm / in	Pipe OD mm / in	Working Pressure PSI / Mpa	Hole Dia mm / in	Dimensions mm/in				Bolt Size
150 x 100 6½O.D x 4	165.1 x 114.3 6.500 x 4.500	300 2.07	114 4.5	244 9.6	154 6.06	135 5.32	97.5 3.84	5/8 x 110
150 x 40 6 x 1½	168.3 x 48.3 6.500 x 1.900	300 2.07	51 2	247 9.72	95 3.74	128 5.04	98.5 3.88	5/8 x 110
150 x 50 6 x 2	168.3 x 60.3 6.625 x 2.375	300 2.07	64 2.5	247 9.72	95 3.74	128 5.04	98.5 3.88	5/8 x 110
150 x 65 6 x 2½	168.3 x 73.0 6.625 x 2.875	300 2.07	70 2.75	247 9.72	115 4.53	134 5.28	98.5 3.88	5/8 x 110
150 x 80 6 x 3	168.3 x 88.9 6.625 x 3.500	300 2.07	89 3.5	247 9.72	132 5.2	141 5.55	98.5 3.88	5/8 x 110
150 x 100 6 x 4	168.3 x 114.3 6.625 x 4.500	300 2.07	114 4.5	247 9.72	156.5 6.16	138 5.43	98.5 3.88	5/8 x 110
200 x 50 8 x 2	219.1 x 60.3 8.625 x 2.375	300 2.07	64 2.5	322 12.68	118 4.65	158 6.22	125 4.92	3/4 x 115
200 x 65 8 x 2½	219.1 x 76.1 8.625 x 3.000	300 2.07	70 2.75	322 12.68	118 4.65	158 6.22	125 4.92	3/4 x 115
200 x 80 8 x 3	219.1 x 88.9 8.625 x 3.500	300 2.07	89 3.5	322 12.68	136.5 5.37	161 6.34	125 4.92	3/4 x 115
200 x 100 8 x 4	219.1 x 114.3 8.625 x 4.500	300 2.07	114 4.5	322 12.68	164 6.46	161 6.34	125 4.92	3/4 x 115
250 x 100 10 x 4	273.0 x 114.3 10.750 x 4.500	300 2.07	114 4.5	376 14.8	164 6.46	189 7.44	155 6.1	3/4 x 115

Mechanical Tee (Threaded Outlet) - 3JS



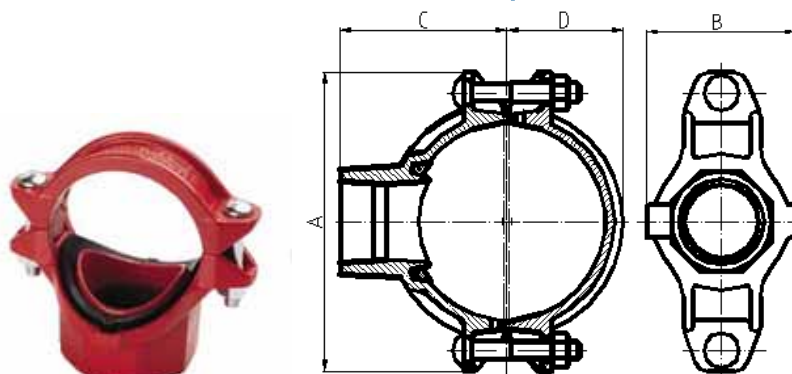
Nominal Size mm / in	Pipe OD mm / in	Working Pressure PSI / Mpa	Hole Dia mm / in	Dimensions mm/in				Bolt Size
			+1.6,0/+0.063,0	A	B	C	D	
50 x 15 2 x ½	60.3 x 21.3 2.375 x 0.825	300 2.07	38 1.5	116 4.57	68 2.68	60 2.36	39 1.54	3/8 x 55
50 x 20 2 x ¾	60.3 x 26.9 2.375 x 1.050	300 2.07	38 1.5	116 4.57	68 2.68	60 2.36	39 1.54	3/8 x 55
50 x 25 2 x 1	60.3 x 33.7 2.375 x 1.315	300 2.07	38 1.5	116 4.57	68 2.68	60 2.36	39 1.54	3/8 x 55
50 x 32 2 x 1¼	60.3 x 42.4 2.375 x 1.660	300 2.07	45 1.75	116 4.57	76 2.99	65 2.56	39 1.54	3/8 x 55
50 x 40 2 x 1½	60.3 x 48.3 2.375 x 1.900	300 2.07	45 1.75	116 4.57	76 2.99	65 2.56	39 1.54	3/8 x 55
65 x 20 2½ x ¾	73.0 x 26.9 2.875 x 1.050	300 2.07	38 1.5	144 5.67	71 2.76	75 2.72	49 1.93	1/2 x 60
65 x 25 2½ x 1	73.0 x 33.7 2.875 x 1.315	300 2.07	38 1.5	144 5.67	70 2.76	69 2.72	49 1.93	1/2 x 60
65 x 32 2½ x 1¼	73.0 x 42.4 2.875 x 1.660	300 2.07	51 2	144 5.67	84.5 3.33	73 2.87	49 1.93	1/2 x 60
65 x 40 2½ x 1½	73.0 x 48.3 2.875 x 1.900	300 2.07	51 2	144 5.67	84.5 3.33	73 2.87	49 1.93	1/2 x 60
65 x 15 76.1 x ½	76.1 x 21.3 3.000 x 0.825	300 2.07	38 1.5	137 5.39	71 2.8	75 3.05	49.5 1.95	1/2 x 75
65 x 20 76.1 x ¾	76.1 x 26.9 3.000 x 1.050	300 2.07	38 1.5	137 5.39	71 2.8	75 3.05	49.5 1.95	1/2 x 75

Mechanical Tee (Threaded Outlet) - 3JS



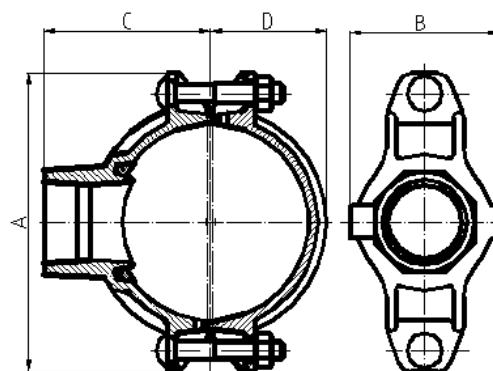
Nominal Size mm / in	Pipe OD mm / in	Working Pressure PSI / Mpa	Hole Dia mm / in	Dimensions mm/in				Bolt Size
			+1.6,0/+0.063,0	A	B	C	D	
65 x 25 76.1 x 1	76.1 x 33.7 3.000 x 1.315	300 2.07	38 1.5	137 5.39	71 2.8	75 3.05	49.5 1.95	1/2 x 75
65 x 32 76.1 x 1¼	76.1 x 42.4 3.000 x 1.660	300 2.07	51 2	137 5.39	84.5 3.33	75 3.05	49.5 1.95	1/2 x 75
65 x 40 76.1 x 1½	76.1 x 48.3 3.000 x 1.900	300 2.07	51 2	137 5.39	84.5 3.33	75 3.05	49.5 1.95	1/2 x 75
80 x 25 3 x ½	88.9 x 21.3 3.500 x 0.825	300 2.07	38 1.5	152 5.98	72.5 2.85	80 3.15	56.5 2.22	1/2 x 75
3 x ¾	88.9 x 26.9 3.500 x 1.050	300 2.07	38 1.5	152 5.98	72.5 2.85	80 3.15	56.5 2.22	1/2 x 75
80 x 25 3 x 1	88.9 x 33.7 3.500 x 1.315	300 2.07	38 1.5	152 5.98	72.5 2.85	80 3.15	56.5 2.22	1/2 x 75
80 x 32 3 x 1¼	88.9 x 42.4 3.500 x 1.660	300 2.07	51 2	152 5.98	85.5 3.37	80 3.15	56.5 2.22	1/2 x 75
80 x 40 3 x 1½	88.9 x 48.3 3.500 x 1.900	300 2.07	51 2	152 5.98	85.5 3.37	80 3.15	56.5 2.22	1/2 x 75
80 x 50 3 x 2	88.9 x 60.3 3.500 x 2.375	300 2.07	64 2.5	152 5.98	98 3.86	80 3.15	56.5 2.22	1/2 x 75
100 x 25 108.0 x 1	108.1 x 33.7 4.250 x 1.315	300 2.07	38 1.5	172 6.77	78.5 3.09	87 3.43	64.5 2.54	1/2 x 75
100 x 32 108.0 x 1¼	108.1 x 42.4 4.250 x 1.660	300 2.07	51 2	172 6.77	89 3.5	87 3.43	64.5 2.54	1/2 x 75

Mechanical Tee (Threaded Outlet) - 3JS



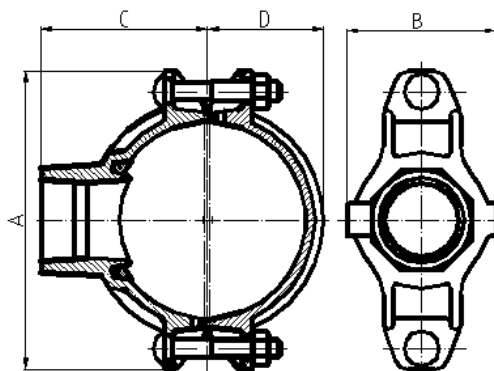
Nominal Size mm / in	Pipe OD mm / in	Working Pressure PSI / Mpa	Hole Dia mm / in	Dimensions mm/in				Bolt Size
			+1.6,0/+0.063,0	A	B	C	D	
100 x 40 108.0 x 1½	108.0 x 48.3 4.250 x 1.900	300 2.07	51 2	172 6.77	89 3.5	87 3.43	64.5 2.54	1/2 x 75
100 x 50 108.0 x 2	108.0 x 60.3 4.250 x 2.375	300 2.07	64 2.5	172 6.77	106.5 4.19	92 3.62	64.5 2.54	1/2 x 75
100 x 65 108.0 x 76.1	108.0 x 76.1 4.250 x 3.000	300 2.07	70 2.75	172 6.77	106.5 4.19	100 3.94	64.5 2.54	1/2 x 75
100 x 15 4 x ½	114.3 x 21.3 4.500 x 0.825	300 2.07	38 1.5	188 7.4	78.5 3.09	90 3.54	70 2.76	1/2 x 75
100 x 20 4 x ¾	114.3 x 26.9 4.500 x 1.050	300 2.07	38 1.5	188 7.4	78.5 3.09	90 3.54	70 2.76	1/2 x 75
100 x 25 4 x 1	114.3 x 33.7 4.500 x 1.315	300 2.07	38 1.5	188 7.4	78.5 3.09	93 3.66	70 2.76	1/2 x 75
100 x 32 4 x 1¼	114.3 x 42.4 4.500 x 1.660	300 2.07	51 2	188 7.4	89 3.5	95 3.74	70 2.76	1/2 x 75
100 x 40 4 x 1½	114.3 x 48.3 4.500 x 1.900	300 2.07	51 2	188 7.4	89 3.5	97 3.82	70 2.76	1/2 x 75
100 x 50 4 x 2	114.3 x 60.3 4.500 x 2.375	300 2.07	64 2.5	188 7.4	104.5 4.11	100 3.94	70 2.76	1/2 x 75
100 x 65 4 x 2½	114.3 x 73.0 4.500 x 2.875	300 2.07	70 2.75	188 7.4	104.5 4.11	102 4.02	70 2.76	1/2 x 75
100 x 65 4 x 76.1	114.3 x 76.1 4.500 x 3.000	300 2.07	70 2.75	188 7.4	104.5 4.11	102 4.02	70 2.76	1/2 x 75

Mechanical Tee (Threaded Outlet) - 3JS



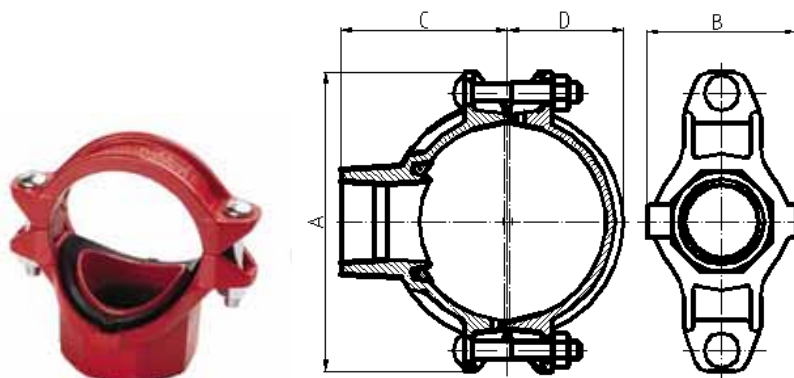
Nominal Size mm / in	Pipe OD mm / in	Working Pressure PSI / Mpa	Hole Dia mm / in	Dimensions mm/in				Bolt Size
			+1.6,0/+0.063,0	A	B	C	D	
100 x 80 4 x 3	114.3 x 88.9 4.500 x 3.500	300 2.07	89 3.5	188 7.4	124 4.88	102 4.02	70 2.76	1/2 x 75
125 x 25 133.0 x 1	133.0 x 33.7 5.250 x 1.315	300 2.07	38 1.5	209 8.23	78 3.07	105 4.13	77 3.03	5/8 x 85
125 x 32 133.0 x 1.25	133.0 x 42.4 5.250 x 1.660	300 2.07	51 2	209 8.23	93 3.66	105 4.13	77 3.03	5/8 x 85
125 x 40 133.0 x 1½	133.0 x 48.3 5.250 x 1.900	300 2.07	51 2	209 8.23	93 3.66	105 4.13	77 3.03	5/8 x 85
125 x 50 133.0 x 2	133.0 x 60.3 5.250 x 2.375	300 2.07	64 2.5	209 8.23	112.5 4.43	110 4.33	77 3.03	5/8 x 85
125 x 65 133.0 x 76.1	133.0 x 76.1 5.250 x 3.000	300 2.07	70 2.75	209 8.23	112.5 4.43	115 4.53	77 3.03	5/8 x 85
125 x 80 133.0 x 3	133.0 x 88.9 5.250 x 3.500	300 2.07	89 3.5	209 8.23	132 5.2	118 4.65	77 3.03	5/8 x 85
125 x 25 139.7 x 1	139.7 x 33.7 5.500 x 1.315	300 2.07	38 1.5	221.5 8.72	78 3.07	110 4.33	84 3.31	5/8 x 85
125 x 32 139.7 x 1¼	139.7 x 42.4 5.500 x 1.660	300 2.07	51 2	221.5 8.72	93 3.66	112 4.41	84 3.31	5/8 x 85
125 x 40 139.7 x 1½	139.7 x 48.3 5.500 x 1.900	300 2.07	51 2	221.5 8.72	93 3.66	112 4.41	84 3.31	5/8 x 85
125 x 50 139.7 x 2	139.7 x 60.3 5.500 x 2.375	300 2.07	64 2.5	221.5 8.72	112.5 4.43	115 4.53	84 3.31	5/8 x 85

Mechanical Tee (Threaded Outlet) - 3JS



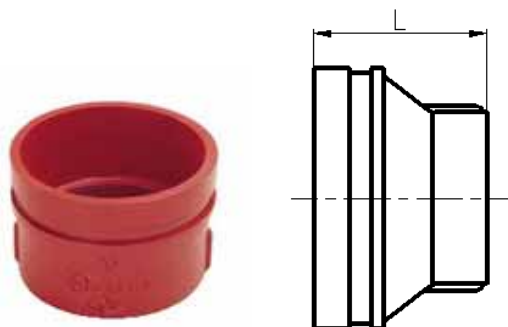
Nominal Size mm / in	Pipe OD mm / in	Working Pressure PSI / Mpa	Hole Dia mm / in	Dimensions mm/in				Bolt Size
			+1.6,0/+0.063,0	A	B	C	D	
125 x 65 139.7 x 76.1	139.7 x 76.1 5.500 x 3.000	300 2.07	70 2.75	221.5 8.72	112.5 4.43	115 4.53	84 3.31	5/8 x 85
125 x 80 139.7 x 3	139.7 x 88.9 5.500 x 3.500	300 2.07	89 3.5	221.5 8.72	132 5.2	120 4.72	84 3.31	5/8 x 85
125 x 100 139.7 x 4	139.7 x 114.3 5.500 x 4.500	300 2.07	114 4.5	221.5 8.72	156 6.3	125 4.92	84 3.31	5/8 x 85
150 x 15 165.1 x 1/2	165.1 x 21.3 6.500 x 0.825	300 2.07	38 1.5	244 9.6	78 3.07	115 4.53	97.5 3.84	5/8 x 110
125 x 20 165.1 x 3/4	165.1 x 26.9 6.500 x 1.050	300 2.07	38 1.5	244 9.6	78 3.07	115 4.53	97.5 3.84	5/8 x 110
150 x 25 165.1 x 1	165.1 x 33.7 6.500 x 1.315	300 2.07	38 1.5	244 9.6	78 3.07	118 4.65	97.5 3.84	5/8 x 110
150 x 32 165.1 x 1 1/4	165.1 x 42.4 6.500 x 1.660	300 2.07	51 2	244 9.6	93 3.66	118 4.65	97.5 3.84	5/8 x 110
150 x 40 165.1 x 1 1/2	165.1 x 48.3 6.500 x 1.900	300 2.07	51 2	244 9.6	93 3.66	118 4.65	97.5 3.84	5/8 x 110
150 x 50 165.1 x 2	165.1 x 60.3 6.500 x 2.375	300 2.07	64 2.5	244 9.6	112.5 4.43	128.5 5.43	97.5 3.84	5/8 x 110
150 x 65 165.1 x 76.1	165.1 x 76.1 6.500 x 3.000	300 2.07	70 2.75	244 9.6	112.5 4.43	128.5 5.43	97.5 3.84	5/8 x 110
150 x 80 165.1 x 3	165.1 x 88.9 6.500 x 3.500	300 2.07	89 3.5	244 9.6	132 5.2	128.5 5.06	97.5 3.84	5/8 x 110
150 x 100 165.1 x 4	165.1 x 114.3 6.500 x 4.500	300 2.07	114 4.5	244 9.6	132 5.2	128.5 5.06	97.5 3.84	5/8 x 110

Mechanical Tee (Threaded Outlet) - 3JS



Nominal Size mm / in	Pipe OD mm / in	Working Pressure PSI / Mpa	Hole Dia mm / in	Dimensions mm/in				Bolt Size
			+1.6,0/+0.063,0	A	B	C	D	
150 x 15 168.3 x 1/2	168.3 x 21.3 6.500 x 0.825	300 2.07	38 1.5	244 9.6	78 3.07	115 4.53	97.5 3.84	5/8 x 110
125 x 20 168.3 x 3/4	168.3 x 26.9 6.500 x 1.050	300 2.07	38 1.5	244 9.6	78 3.07	115 4.53	97.5 3.84	5/8 x 110
150 x 25 168.3 x 1	168.3 x 33.7 6.500 x 1.315	300 2.07	38 1.5	244 9.6	78 3.07	118 4.65	97.5 3.84	5/8 x 110
150 x 32 168.3 x 1 1/4	168.3 x 42.4 6.500 x 1.660	300 2.07	51 2	244 9.6	93 3.66	118 4.65	97.5 3.84	5/8 x 110
150 x 40 168.3 x 1 1/2	168.3 x 48.3 6.500 x 1.900	300 2.07	51 2	244 9.6	93 3.66	118 4.65	97.5 3.84	5/8 x 110
150 x 50 168.3 x 2	168.3 x 60.3 6.500 x 2.375	300 2.07	64 2.5	244 9.6	112.5 4.43	128.5 5.43	97.5 3.84	5/8 x 110
150 x 65 168.3 x 2 1/2	168.3 x 76.1 6.500 x 3.000	300 2.07	70 2.75	244 9.6	112.5 4.43	128.5 5.43	97.5 3.84	5/8 x 110
150 x 80 168.3 x 3	168.3 x 88.9 6.500 x 3.500	300 2.07	89 3.5	244 9.6	132 5.2	128.5 5.06	97.5 3.84	5/8 x 110
150 x 100 168.3 x 4	168.3 x 114.3 6.500 x 4.500	300 2.07	114 4.5	244 9.6	132 5.2	128.5 5.06	97.5 3.84	5/8 x 110

Concentric Reducer (Grooved x Threaded) - 240N



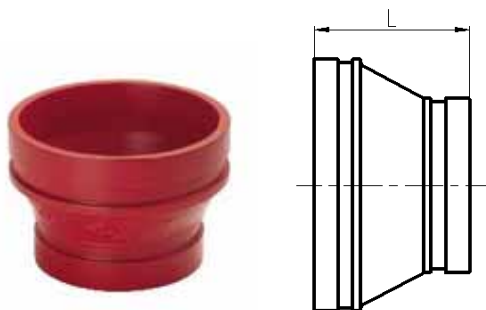
Nominal Size Grooved x Threaded mm / in	Pipe O.D. mm / in	Working Pressure PSI / Mpa	Dimensions mm / in
50 x 15 – 40 2 x ½ - 1½	60.3 x 21.3 – 48.3 2.375 x 0.825 – 1.9	500 3.45	64 2.5
65 x 25 – 50 2½ x 1 – 2	73.0 x 33.7 – 60.3 2.875 x 1.315 – 2.375	500 3.45	64 2.5
65 x 15 – 50 2½ x ½ - 2	76.1 x 21.3 – 60.3 3.000 x 0.825 – 2.375	500 3.45	64 2.5
80 x 15 – 65 3 x ½ - 2 ½	88.9 x 21.3 – 76.1 3.500 x 0.825 – 3.0	500 3.45	64 2.5
100 x 25 – 80 4 x 1 – 3	108.0 x 33.7 – 88.9 4.250 x 1.315 – 3.5	500 3.45	76 3
100 x 15 – 80 4 x ½ - 3	114.3 x 21.3 – 88.9 4.500 x 0.825 – 3.5	500 3.45	76 3
125 x 40 – 65 5 x 1½ - 2 ½	133.0 x 48.3 – 76.1 5.250 x 1.900 – 3	500 3.45	102 4
125 x 25 – 100 5 x 1 – 4	139.7 x 33.7 – 114.3 5.500 x 1.315 – 4.5	500 3.45	102 4
150 x 20 – 100 6 x ¾ - 4	159.0 x 26.9 – 114.3 6.250 x 1.05 – 4.50	500 3.45	102 4
150 x 15 – 100 6 x ½ - 4	165.1 x 21.3 – 114.3 6.500 x 0.825 – 4.5	500 3.45	102 4
150 x 25 – 125 6 x 1 – 5	168.3 x 33.7 – 141.3 6.625 x 1.315 – 5.563	500 3.45	102 4
200 x 40 – 150 8 x 1½ - 6	219.1 x 48.3 – 168.3 8.625 x 1.900 – 6.625	500 3.45	127 5

Concentric Reducer (Grooved Ends) - 240



Nominal Size mm / in	Pipe O.D. mm / in	Working Pressure PSI / Mpa	Dimensions L - mm / in
32 X 25 1 ¹ / ₄ X 1	42.4 X 33.7 1.660 X 1.315	500 3.45	64 2.5
40 X 32 1 ¹ / ₂ X 1 ¹ / ₄	48.3 X 42.4 1.900 X 1.660	500 3.45	64 2.5
50 X 32 – 40 2 X 1 ¹ / ₄ - 1 ¹ / ₂	60.3 X 42.4 – 48.3 2.375 X 1.660 – 1.9	500 3.45	64 2.5
65 X 50 2 ¹ / ₂ X 2	73.0 X 60.3 2.875 X 2.375	500 3.45	64 2.5
65 X 40 – 50 2 ¹ / ₂ X 1 ¹ / ₂ - 2	76.1 X 48.3 – 60.3 3.000 X 1.900 – 2.375	500 3.45	64 2.5
80 X 25 – 65 3 X 1 – 2 ¹ / ₂	88.9 X 33.7 – 76.1 3.500 X 1.315 – 3	500 3.45	64 2.5
100 X 32 – 80 4 X 1 ¹ / ₄ - 3	114.3 X 42.4 – 88.9 4.500 X 1.660 – 3.500	500 3.45	76 3
100 X 50 – 80 4 X 2 - 3	108.0 X 60.3 – 88.9 4.250 X 2.375 – 3.5	500 3.45	76 3
125 X 100 5 X 4	133.0 X 108.0 5.250 X 4.250	500 3.45	102 4
125 X 100 5 X 4	133.0 X 114.3 5.250 X 4.500	500 3.45	102 4
125 X 50 5 X 2	139.7 X 60.3 5.500 X 2.375	500 3.45	102 4
125 X 65 – 100 5 X 2 ¹ / ₂ - 4	139.7 X 76.1 – 114.3 5.500 X 3.000 – 4.5	500 3.45	89 3.5
125 X 80 5 X 3	139.7 X 88.9 5.500 X 3.500	500 3.45	89 3.5
150 X 50 – 125 6 X 2 – 5	165.1 X 60.3 – 139.7 6.500 X 2.375 – 5.5	500 3.45	102 4

Concentric Reducer (Grooved x Threaded) - 240N



Nominal Size mm / in	Pipe O.D. mm / in	Working Pressure PSI / Mpa	Dimensions L - mm / in
150 X 50 – 125 6 X 2 - 5	168.3 X 60.3 - 141.3 6.625 X 2.375 – 5.563	500 3.45	102 4
200 X 100 8 X 4 - 6	216.3 X 114.3 – 165.1 8.516 X 4.500 – 6.5	500 3.45	127 5
200 X 65 – 150 8 X 2½ - 6	219.1 X 73.0 – 168.3.0 8.625 X 2.875 – 6.625	500 3.45	127 5
250 X 150 10 X 6	273.0 X 159.0 10.750 X 6.250	500 3.45	127 5
250 X 150 – 200 10 X 6 - 8	273.0 X 165.1 – 219.1 10.750 X 6.500 – 8.625	500 3.45	152 6
300 X 200 – 250 12 X 8 – 10	323.9 X 219.1 – 273.0 12.750 X 8.625 – 10.75	500 3.45	178 7